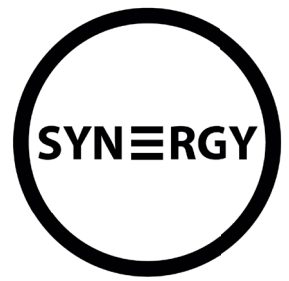


AXIOME SURFACE

SURFACE MOUNTED LED DOWNLIGHT



Code	Finish	Size (mm)	Delivered Lumens (lm)	Total System Wattage (W)	Efficacy (lm/cw)	Colour Temp (°K)	CRI
AXMW/F/1500/3K8/SM	White	ø 232 x 98	1524	20	76.2	3000K	>80
AXMW/F/1500/4K8/SM	White	ø 232 x 98	1524	20	76.2	4000K	>80
AXMW/F/2300/3K8/SM	White	ø 232 x 100	2285	30	76.2	3000K	>80
AXMW/F/2300/4K8/SM	White	ø 232 x 100	2285	30	76.2	4000K	>80

- 3 year warranty
- See website for LDT files
- For CAD/BIM contact us
- See website for Technical Data Sheet

AXIOME SURFACE

SURFACE MOUNTED LED DOWNLIGHT

Construction

- Powdercoated steel
- Two part construction
- 25mm Central Entry Hole
- Surface or Besa box fixing

Features

- Housing for the Axiome downlight
- Suspension kits available
- Space for control gear

Applications

- Commercial and Business Areas
- Public buildings
- Housing
- Offices
- Hotels and Restaurants
- Arts and Culture spaces

Benefits

- Cost effective surface solution
- Contemporary style
- Easy to install
- Emergency and dimming options

Optical Options

Code	Description
N/A	Opal (Standard)

CCT Options

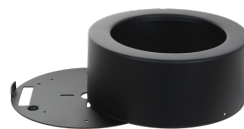
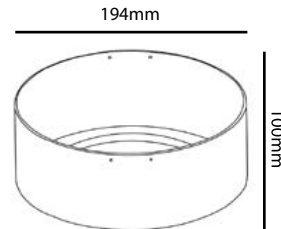
Code	Description
N/A	Switchable, 3K, 4K and 5K

Control Options

Code	Description
D	DALI
S	Switchdim control

For DALI control, replace 'F' in part number with 'D'
for SwitchDim replace 'F' with 'S'

Dimensions



Mounting Options

Code	Description
N/A	Surface mouted (Standard)
/SUS	Suspended
N/A	For recessed see Axiome spec

Finish Options

Code	Description
B	Black RAL 9005
W	White RAL 9016 (Standard)

For White finish, replace 'B' in part number with 'W' for Silver replace 'B' with 'S'

Emergency Options

Code	Description
/EM	3 hour maintained, manual test
/ED	3 hour maintained DALI/Self Test

For emergency version, add onto end of part number as required

synergy.gb.net

01992 445828

sales@synergy.gb.net

Please note: Specification values may change due to rapid development of lighting technology. All performance data is taken at an ambient temperature of +25 °C. Data may be rounded up/down for illustrative purposes. Tolerance range of optical and electrical data is +/- 10%. Synergy reserve the right to amend or change details without prior notification.

synergy.gb.net